



# Selgars.

Reconnect in Nature.



# Welcome to Our Village...

Selgars Mill is a beautiful converted 19th Century mill house with cottages, set in eight acres of secluded grounds in the Culm Valley in Mid Devon.

Our indoor accommodation has up to 23 beds across the Mill House, Mill Lodge, Pond Lodge and the Waggon. Max capacity if all doubles are shared and all sofa beds used is 30.

We also have 17 beds in our emperor bell tents that can sleep an additional 21 people if all doubles are shared.

[Watch Video Tour](#)



**Selgars.**



# Forget Boring Corporate Hotels. Experience the Magic of Selgars Mill...



Invest in your team culture and create memories that you and your team will cherish forever!

# Organisations We Have Hosted..





Selgars.



“Finally home guys! I know it’s late but had to write a little something while my heart is SO full! ❤️

Just want to say a huge thank you for the past few days! It’s truly been some of the best days of my LIFE! Seeing everyone connect and bond, just like a true family, makes me so proud of all we’ve achieved together! And to think this is only just the beginning!

I’m so excited for many more adventures to come in the future and memories to create and cherish forever!

Special thanks to Anton for opening Selgars to us! We loved every minute of our stay!”



**Akash Mehta, CEO of Fable & Mane**



# Watch Our Virtual Tour



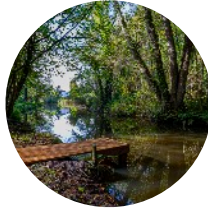
<https://youtu.be/FZgcHbMXoyc>



# Activities & Workshops



Biodiversity Tours &  
Mindful Nature Walks



Dynamic Meditation & Wild  
Swimming



Collaborative Painting &  
Nature Art



Bonfire, Singing &  
Live Music



Sound Baths &  
Yoga



Empathic Communication &  
Collaboration Training



Self-leadership & Trauma  
Awareness Training



Body Listening &  
Mindful Movement

# Travel Distances

Fantastic rail & road connections. A seamless journey by bike as well as train. Ideal for Londoners who don't own cars.

## By Train

2½ miles from Tiverton Parkway, which is

- 14 minutes from Exeter St Davids
- 45 minutes from Bristol Temple Meads
- 2 hours from London Paddington
- 2¼ hours from Birmingham New Street
- Less than 4 hours from Manchester Piccadilly

## By Bike

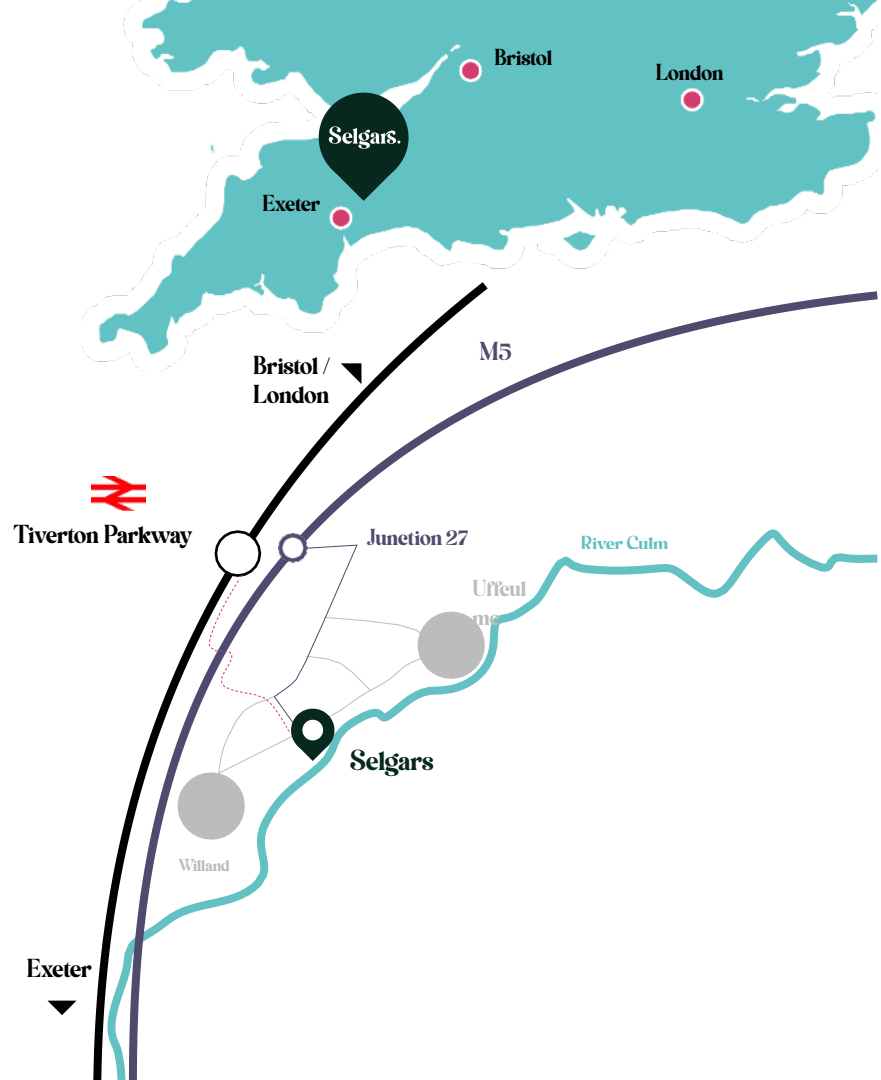
12 minutes from Tiverton Parkway

## By Bus

Number 1 route from Exeter to Tiverton. 200m from Langlands Business Park bus stop.

## By Car

2½ miles from Junction 27 of M5.



# Food is Medicine

When it comes to food, we keep things simple. We work with a network of regenerative chefs that combine locally sourced ingredients with herbs, fruits and veg grown onsite. We also give tours of the land where guests can taste tomatoes, salads, flowers and fruit picked fresh from our veg garden and orchard. We are planning to start growing mushrooms soon.





Waggon

WC

Hidden Field

Events Field

Walled Garden

Mill House

Mill Lodge

Cottages

Car Parking

Mill Pond

Cami's Barn

Veg Garden

Showers

Catering Area

WC

Bridge

Selgars Cabin

Pond Lodge

Art & Craft Studio

Enchanted Woodland

Fire Pit

Camping Field

Northern Woodland

Wild Woodland

Bell Tent Village

Phoenix

Bridge

Infinity Fire

Extra Car Parking Field

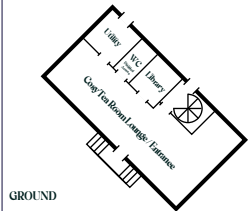
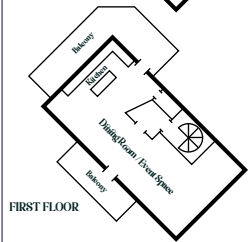
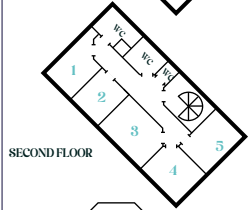
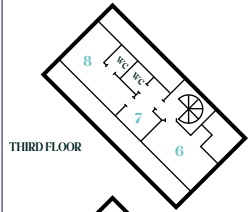
Extra Car Parking Road

Selgars Entrance

Uffculme Road

Bridge

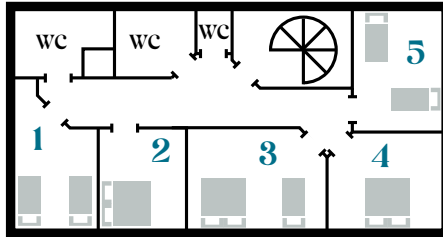
# THE MILL



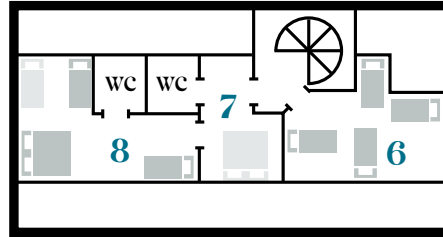
# Selgars Accommodation

## The Mill House

### Second Floor



### Third floor



The top floor is ideal for families and groups that are happy to share.

Our indoor accommodation has up to 22 beds across the Mill House, Mill Lodge, Pond Lodge, the Waggon and the Annex.

Max capacity if all doubles are shared and sofa beds used is 30.



14 single beds



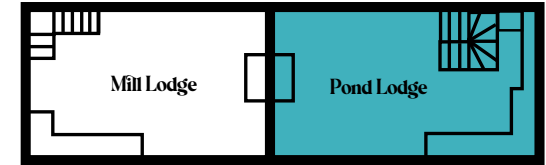
8 double beds



Includes a single and a double sofa bed

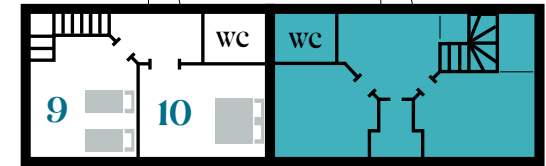
## First Floor (Loft)

## The Cottages



Pond Lodge is for staff use only

## Ground Floor



9 & 10 Disabled Access (ground floor)

11 The Waggon 



12 The Annex 

# Emperor Bell Tents (x8)





Camping Field


-  Water Taps
-  Showers  
(1 Hot, 2 Cold)

Electricity Point

X2 Toilets & Urinals











Falcon LPG Gas x6 burner Oven

-  Bio-Sink (Hot Water) & Catering Prep Area

All food must be scraped into food waste bin before using sink. Only Ecover bio-products allowed.



# Emperor Bell Tents Bedding

- |   |   |  |   |  |  |
|---|---|--|---|--|--|
| 1 |  | <b>X2 single and one small double</b><br>sheets, duvets & bedding provided | 5 |  | <b>X3 single</b><br>sheets, duvets & bedding provided            |
| 2 |  | <b>X2 single and one double</b><br>sheets, duvets & bedding provided       | 6 |  | <b>X3 single</b><br>sheets, duvets & bedding provided            |
| 3 |  | <b>X3 single</b><br>sheets, duvets & bedding provided                      | 7 |  | <b>X1 double, X2 single</b><br>sheets, duvets & bedding provided |
| 4 |  | <b>X3 single</b><br>sheets, duvets & bedding provided                      | 8 |  | <b>X1 King, X1 single</b><br>sheets, duvets & bedding provided   |

X19 single beds

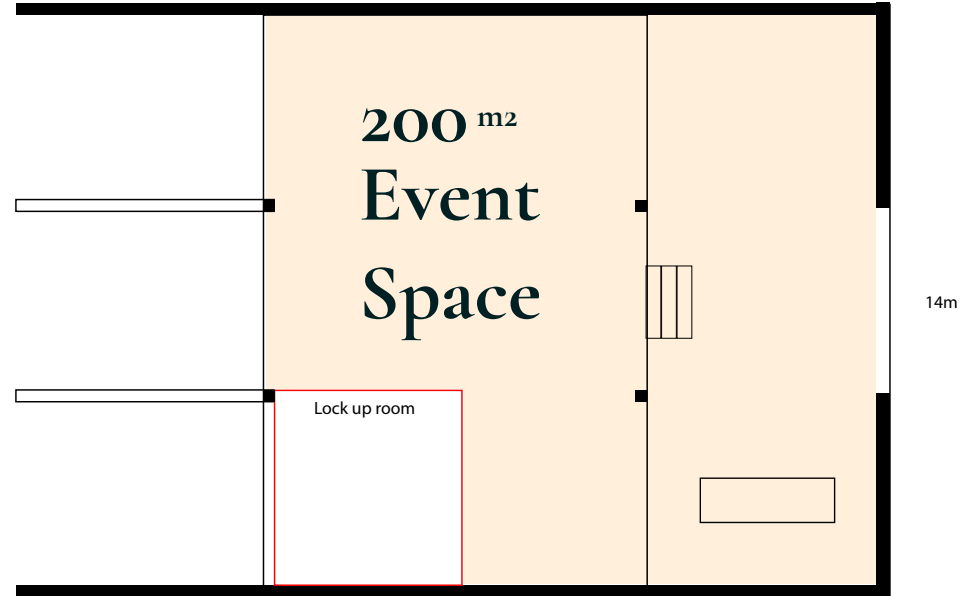
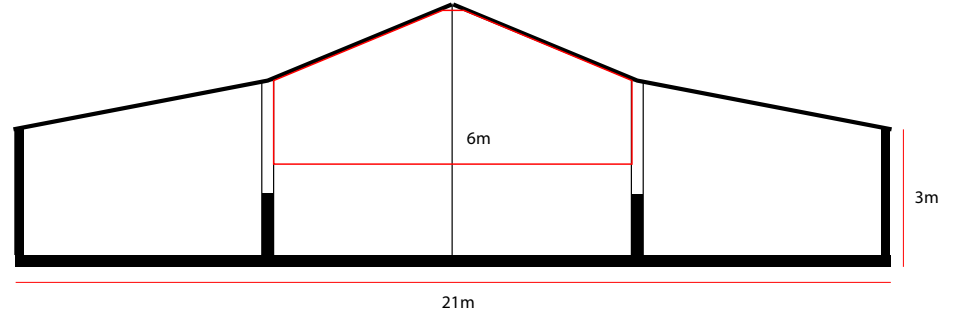
X3 double beds

X1 king bed

Total 23 beds

# Event Barn

- Can seat up to 120 people



# Mill House Large Workshop Space & Open Plan Kitchen





# Our Charming Bedrooms & Bathrooms

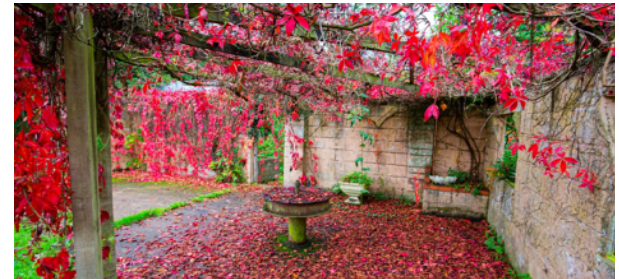




# Edible Garden & Woodland Estate



- Walled edible garden
- Woodlands & forest garden
- Formal lawn area
- Large open grassy areas
- Ponds, streams, secluded spots & more





**Selgars.**  
Reconnect in Nature.

**Let's Talk**  
[team@selgars.org](mailto:team@selgars.org)