



# Selgars.

Reconnect in Nature.



# Welcome to Our Village...

Selgars Mill is a beautiful converted 19th Century mill house with cottages, set in eight acres of secluded grounds in the Culm Valley in Mid Devon.

Our indoor accommodation has up to 23 beds across the Mill House, Mill Lodge, Pond Lodge and the Waggon. Max capacity if all doubles are shared and all sofa beds used is 30.

We also have 17 beds in our emperor bell tents that can sleep an additional 21 people if all doubles are shared.

[Watch Video Tour](#)



**Selgars.**





# Forget Boring Corporate Hotels. Experience the Magic of Selgars Mill...



Invest in your team culture and create memories that you and your team will cherish forever!

# Organisations We Have Hosted..







Selgars.







“Finally home guys! I know it’s late but had to write a little something while my heart is SO full! ❤️

Just want to say a huge thank you for the past few days! It’s truly been some of the best days of my LIFE! Seeing everyone connect and bond, just like a true family, makes me so proud of all we’ve achieved together! And to think this is only just the beginning!

I’m so excited for many more adventures to come in the future and memories to create and cherish forever!

Special thanks to Anton for opening Selgars to us! We loved every minute of our stay!”



**Akash Mehta, CEO of Fable & Mane**







We offer the complete package; a unique mix of indoor and outdoor spaces, delicious locally sourced food and a menu of tried and tested creative and wellness activities that can be woven into your programme.



# Watch Our Virtual Tour



<https://youtu.be/FZgcHbMXoyc>

# Activities & Workshops



Biodiversity Tours &  
Mindful Nature Walks



Dynamic Meditation & Wild  
Swimming



Collaborative Painting &  
Nature Art



Bonfire, Singing &  
Live Music



Sound Baths &  
Yoga



Empathic Communication &  
Collaboration Training



Self-leadership & Trauma  
Awareness Training



Body Listening &  
Mindful Movement



# Travel Distances

Fantastic rail & road connections. A seamless journey by bike as well as train. Ideal for Londoners who don't own cars.

## By Train

2½ miles from Tiverton Parkway, which is

- 14 minutes from Exeter St Davids
- 45 minutes from Bristol Temple Meads
- 2 hours from London Paddington
- 2¼ hours from Birmingham New Street
- Less than 4 hours from Manchester Piccadilly

## By Bike

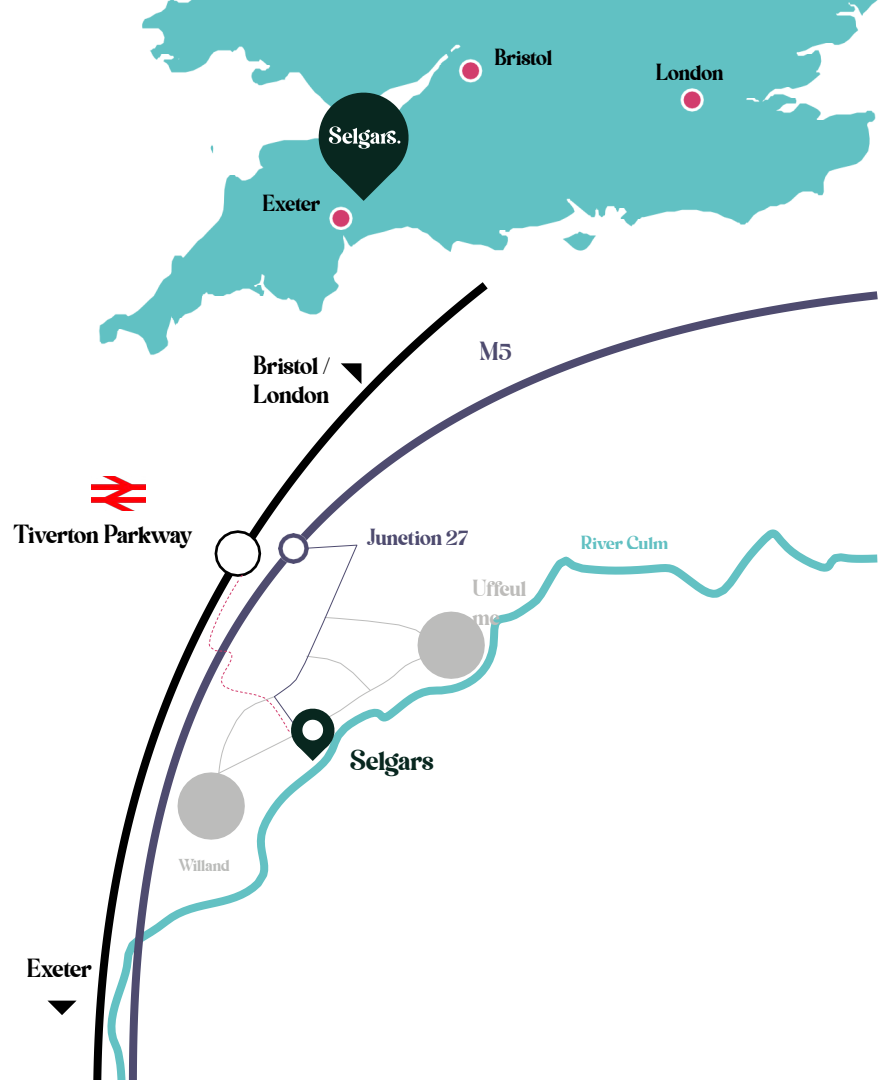
12 minutes from Tiverton Parkway

## By Bus

Number 1 route from Exeter to Tiverton. 200m from Langlands Business Park bus stop.

## By Car

2½ miles from Junction 27 of M5.



# Catering & Farm to Table

When it comes to food, we keep things simple. We work with a wonderful local chef called Sam who cooks honest home-cooked local food, some of which has been grown in our very own veg garden. We give tours of the land where guests can taste tomatoes, greens, flowers and fruit picked fresh from the garden or tree. We have co-created seasonal signature dishes with Sam that include veg and greens grown onsite. We also regularly host outdoor meals.





# Enchanted Gathering Video



<https://youtu.be/SkH7MAFCPg>





Waggon

WC

Mill House

Events Field

Walled Garden

Bridge

Mill Lodge

Cottages

Car Parking

Selgars.  
Entrance

Pond Lodge

Mill Pond

Cami's Barn

Art & Craft Studio

Selgars Cabin

Veg Garden

Showers

Bridge

Enchanted Woodland

Fire Circle X10

Catering Area

WC

Bridge

Fire Circle X6

Bell Tent Village

Fire Pit

Camping Field

Northern Woodland

Phoenix

Wild Woodland

Extra Car Parking Road

Extra Car Parking Field

Bridge

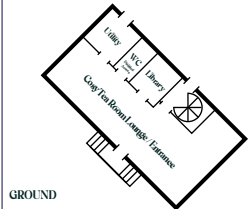
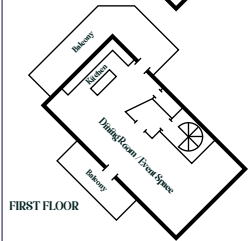
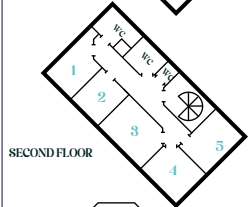
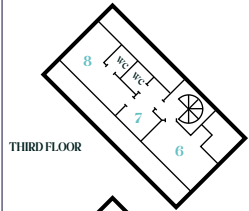
Uffculme Road







# THE MILL

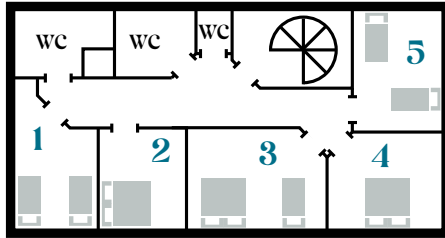




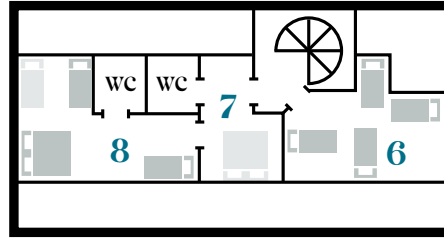
# Selgars Accommodation

## The Mill House

### Second Floor



### Third floor



The top floor is ideal for families and groups that are happy to share.

Our indoor accommodation has up to 22 beds across the Mill House, Mill Lodge, Pond Lodge, the Waggon and the Annex.

Max capacity if all doubles are shared and sofa beds used is 30.



14 single beds



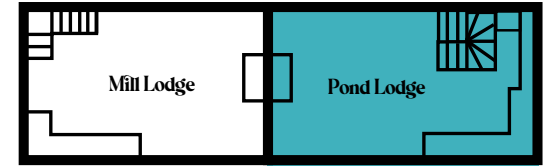
8 double beds



Optional extra single and double sofa beds

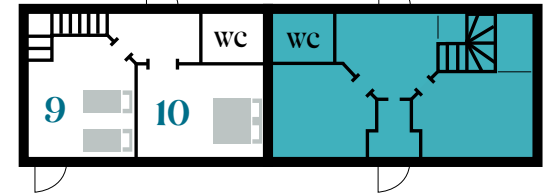
### First Floor (Loft)

### The Cottages



Pond Lodge is for staff use only

### Ground Floor



11 The Waggon 

12 The Annex 







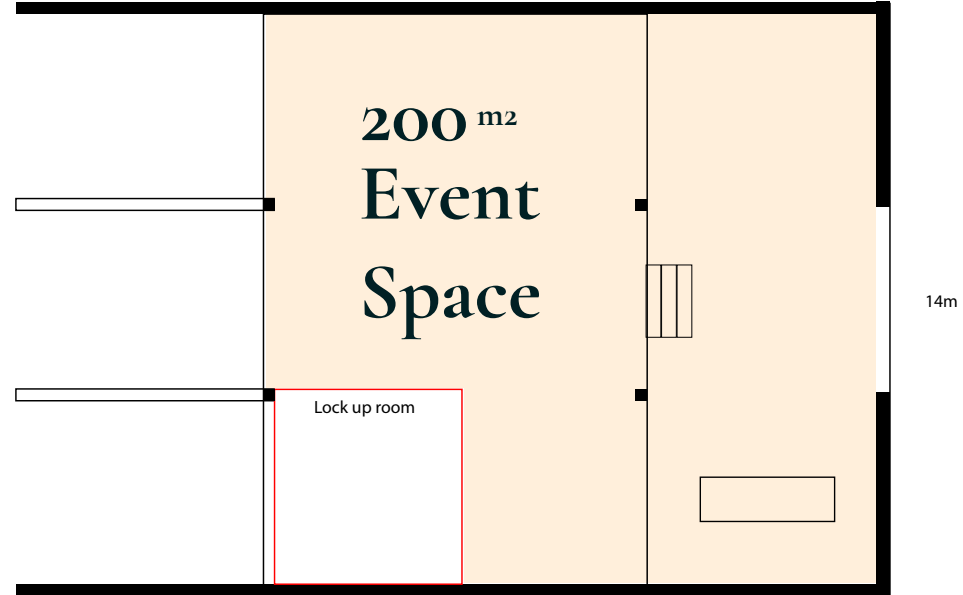
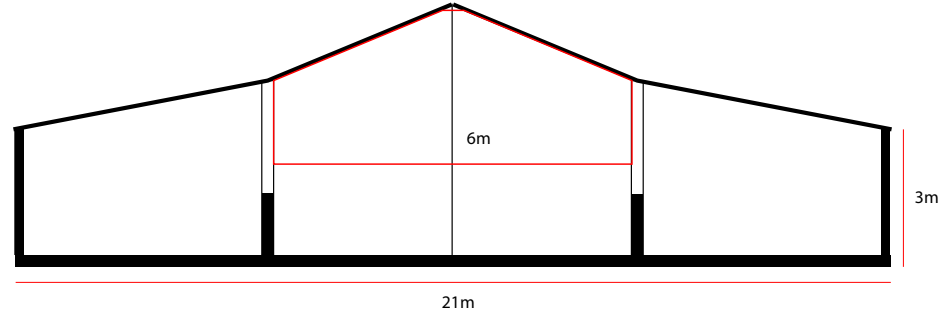




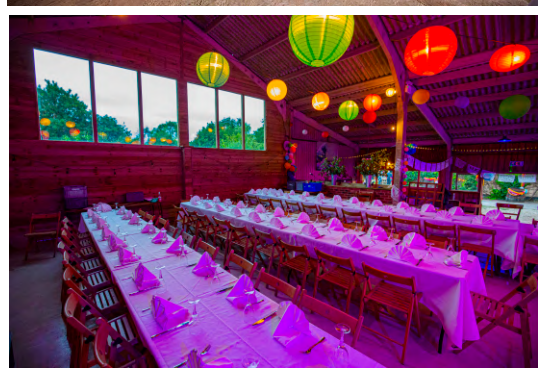


# Event Barn

- Can seat up to 120 people









# Mill House Large Workshop Space & Open Plan Kitchen









# Our Charming Bedrooms & Bathrooms











Toilet

Pagoda

- Water Taps
- Showers (1 Hot, 2 Cold)

Electricity Point

X2 Toilets & Urinals



Falcon LPG Gas x6 burner Oven

- Bio-Sink (Hot Water) & Catering Prep Area

All food must be scraped into food waste bin before using sink. Only Ecover bio-products allowed.



# Emperor Bell Tents (x10)

Access to electricity, multiple outdoor toilets, x3 outdoor showers and outdoor cooking facilities.





# Emperor Bell Tents Bedding

1



**X2 single and one small double**

sheets, duvets & bedding provided

2



**X2 single and one double**

sheets, duvets & bedding provided

3



**X4 single**

sheets, duvets & bedding provided

4



**X2 single and one double**

sheets, duvets & bedding provided

5



**X3 single**

sheets, duvets & bedding provided

6



**X1 King**

sheets, duvets & bedding provided



**7-10 (Empty)**

**Bring your own air mattress & sheets**

**Can be used as event spaces /**

**Kids play area**

We also have an additional single and double air mattress

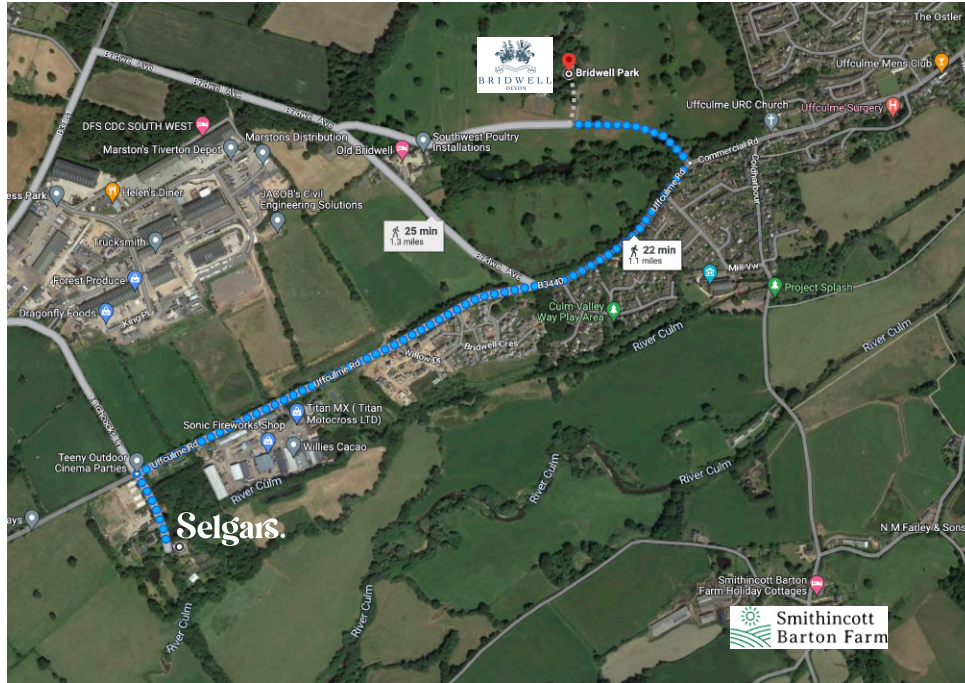


A wide-angle photograph of a lush green camping field. A gravel path starts in the bottom right corner and leads towards the center of the field. In the middle ground, a wooden gazebo with a brown roof stands on the grass. The field is surrounded by a dense forest of tall green trees. The sky is bright blue with some light clouds. The overall scene is peaceful and inviting.

# Camping Field



# Additional Accommodation



Bridwell Park and Smithincott Barton Farm is only a short walk away. Halsbeer Farm is a 13min drive.











**Selgars.**  
Reconnect in Nature.

**Let's Talk**  
[team@selgars.org](mailto:team@selgars.org)