



# Selgars.

Reconnect in Nature.



**Forget Boring  
Corporate Hotels.  
Experience the Magic  
of Selgars Mill &  
Unlock Your Team's  
Full Potential.....**



Invest in your team culture and  
create memories that you and  
your team will cherish forever!



**Organising a successful offsite is not easy. We support you every step of the way.**

We do more than just provide a venue. We help you with the design, food, transportation, facilitation and follow up so that everyone in your team can feel relaxed and fully participate in the programme.

# Organisations We Have Hosted..



# Welcome to Our Village...

Selgars Mill is a beautiful converted 19th Century mill house with cottages, set in eight acres of secluded grounds in the Culm Valley in Mid Devon.

Our indoor accommodation has up to 23 beds across the Mill House, Mill Lodge, Pond Lodge and the Waggon. Max capacity if all doubles are shared and all sofa beds used is 30.

We also have 17 beds in our emperor bell tents that can sleep an additional 21 people if all doubles are shared.

[Watch Video Tour](#)



Car Parking  
↓

**Selgars.**



Selgars.



“Finally home guys! I know it’s late but had to write a little something while my heart is SO full! ❤️

Just want to say a huge thank you for the past few days! It’s truly been some of the best days of my LIFE! Seeing everyone connect and bond, just like a true family, makes me so proud of all we’ve achieved together! And to think this is only just the beginning!

I’m so excited for many more adventures to come in the future and memories to create and cherish forever!

Special thanks to Anton for opening Selgars to us! We loved every minute of our stay!”



**Akash Mehta, CEO of Fable & Mane**



# Watch Our Virtual Tour



<https://youtu.be/FZgcHbMXoyc>



# Our Approach

The most important thing is to be clear on the objective of your offsite and resist the temptation to fill the schedule with too many planned activities. The key is to stay focussed on your objective and allow time for unplanned, co-created and spontaneous moments.

What is the core objective of your offsite?

## **Socials**

To have fun together.  
To connect and bond  
as a team.

## **Strategy**

To work on high level  
strategy and vision. Senior  
Leadership Teams.

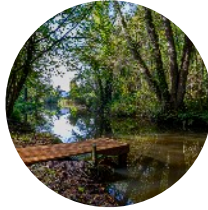
## **Strategy**

To solve specific process or  
product challenges and  
problems.

# Activities & Workshops



Land Tours & Embodied  
Nature Walks



Cold Immersion &  
Breathwork



Collaborative Painting &  
Nature Art



Bonfire, Singing &  
Live Music



Sound Baths &  
Yoga



Empathic Communication &  
Collaboration Training



Nervous System Regulation  
& Resilience Training



Body Listening &  
Mindful Movement

# Travel Distances

Fantastic rail & road connections. A seamless journey by bike as well as train. Ideal for Londoners who don't own cars.

## By Train

2½ miles from Tiverton Parkway, which is

- 14 minutes from Exeter St Davids
- 45 minutes from Bristol Temple Meads
- 2 hours from London Paddington
- 2¼ hours from Birmingham New Street
- Less than 4 hours from Manchester Piccadilly

## By Bike

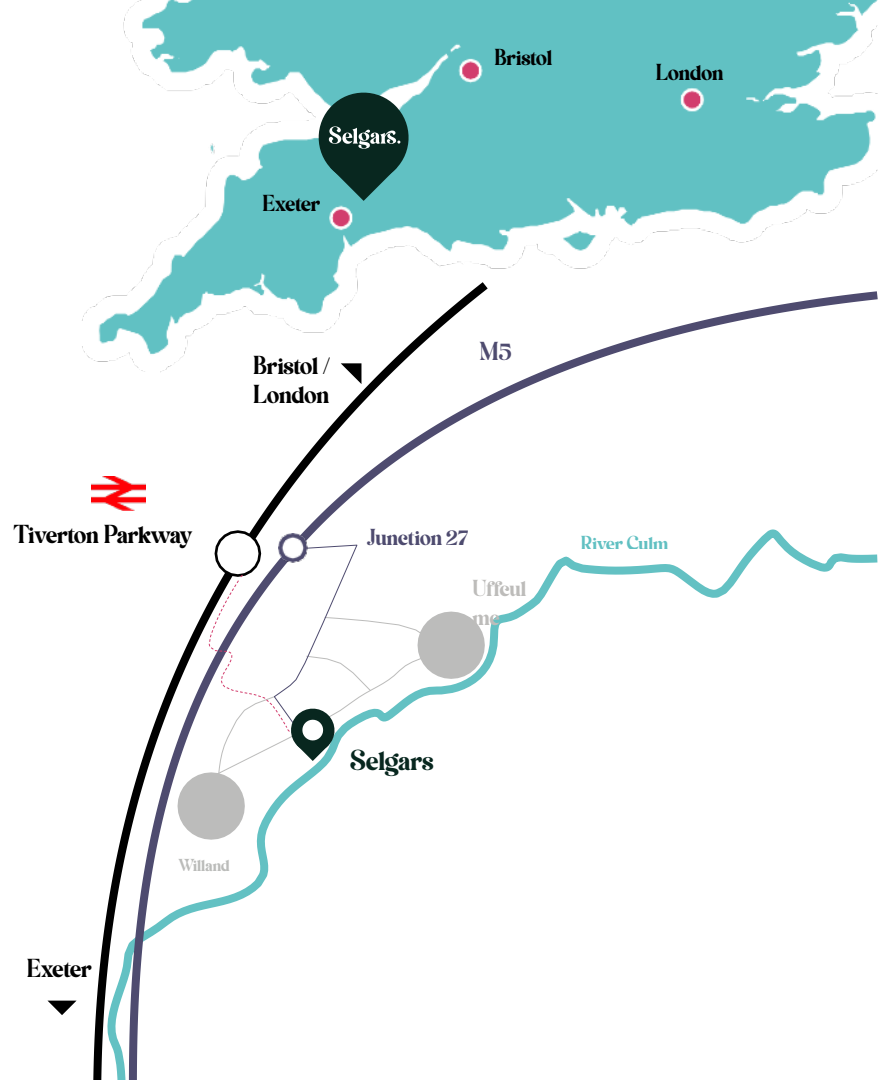
12 minutes from Tiverton Parkway

## By Bus

Number 1 route from Exeter to Tiverton. 200m from Langlands Business Park bus stop.

## By Car

2½ miles from Junction 27 of M5.



# Food is Medicine

When it comes to food, we keep things simple. We work with a network of regenerative chefs that combine locally sourced ingredients with herbs, fruits and veg grown onsite. We also give tours of the land where guests can taste tomatoes, salads, flowers and fruit picked fresh from our veg garden and orchard. We are planning to start growing mushrooms soon.





Waggon

Mill House

Cottages

Selgars.  
Entrance

Uffculme Road

WC

Events Field

Hidden Field

Walled Garden

Bridge

Mill Lodge

Car Parking

Pond Lodge

Mill Pond

Barn

Selgars Cabins

Art & Craft Studio

Infinity Fire

Veg Garden

Showers

Bridge

Enchanted Woodland

Bridge

WC

Catering Area

Xto Cabins

Fire Pit

Camping Field

Northern Woodland

Phoenix

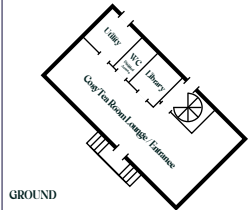
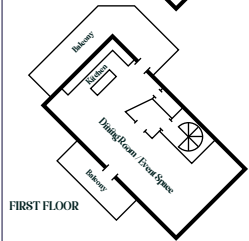
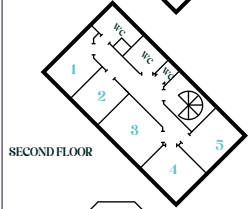
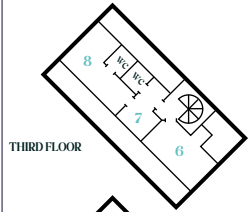
Wild Woodland

Bridge

Extra Car Parking Field

Extra Car Parking Road

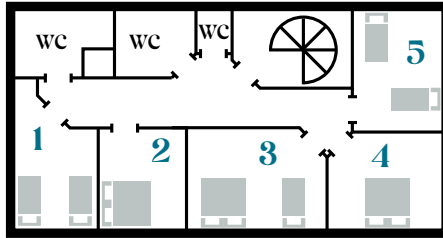
# THE MILL



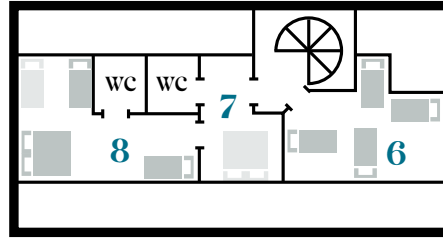
# Selgars Accommodation

## The Mill House

### Second Floor



### Third floor



The top floor is ideal for families and groups that are happy to share.

Our indoor accommodation has up to 22 beds across the Mill House, Mill Lodge, Pond Lodge, the Waggon and the Annex.

Max capacity if all doubles are shared and sofa beds used is 30.



14 single beds



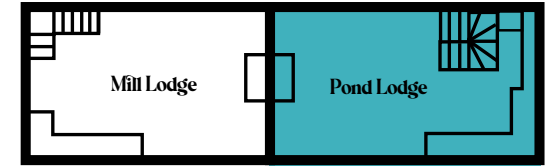
8 double beds



Includes a single and a double sofa bed

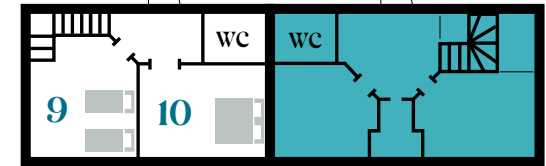
### First Floor (Loft)

## The Cottages



Pond Lodge is for staff use only

### Ground Floor



9 & 10 Disabled Access (ground floor)

11 The Waggon 

12 The Annex 















# Cabins (x10)





# Cabins x10

- |   |   |  |    |  |  |
|---|---|--|----|--|--|
| 1 |  | <b>X2 single and one small double</b><br>sheets, duvets & bedding provided | 6  |  | <b>X2 single and one small double</b><br>sheets, duvets & bedding provided |
| 2 |  | <b>X2 single and one small double</b><br>sheets, duvets & bedding provided | 7  |  | <b>X2 single and one small double</b><br>sheets, duvets & bedding provided |
| 3 |  | <b>X2 single and one small double</b><br>sheets, duvets & bedding provided | 8  |  | <b>Single &amp; double</b><br>sheets, duvets & bedding provided            |
| 4 |  | <b>X2 single and one small double</b><br>sheets, duvets & bedding provided | 9  |  | <b>Single &amp; double</b><br>sheets, duvets & bedding provided            |
| 5 |  | <b>X2 single and one small double</b><br>sheets, duvets & bedding provided | 10 |  | <b>Single &amp; king</b><br>sheets, duvets & bedding provided              |

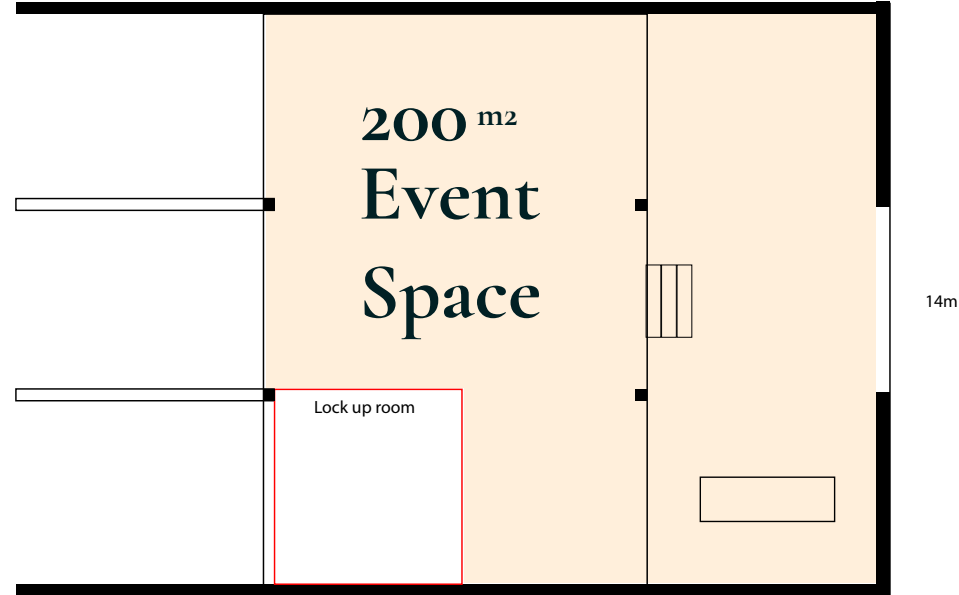
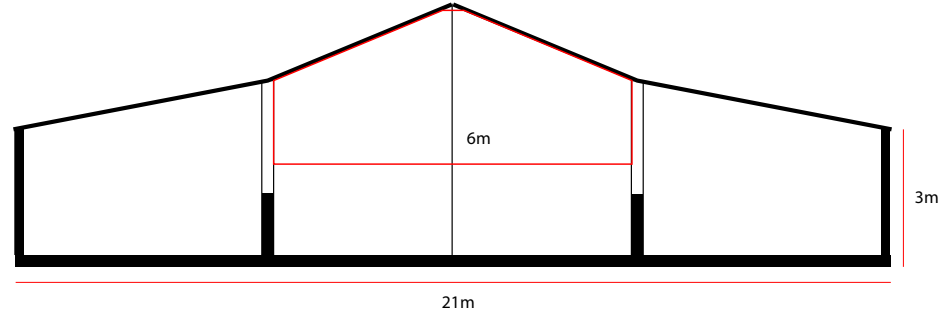
X17 single beds

X3 double beds

Total 20 beds

# Event Barn

- Can seat up to 120 people



# Mill House Large Workshop Space & Open Plan Kitchen





# Our Charming Bedrooms & Bathrooms







# Edible Garden & Woodland Estate



- Walled edible garden
- Woodlands & forest garden
- Formal lawn area
- Large open grassy areas
- Ponds, streams, secluded spots & more





**Selgars.**  
Reconnect in Nature.

**Let's Talk**  
[team@selgars.org](mailto:team@selgars.org)